

# GRAND PARIS SEINE & OISE

REGION OF INDUSTRIAL

RENEWAL



GRAND PARIS  
**SEINE  
& OISE**  
COMMUNAUTÉ URBAINE



## CONTENTS

### P.4 - 5

AN ATTRACTIVE REGION AT THE GATES OF THE GREATER PARIS AREA

### P.6 - 7

A REGION AT THE FOREFRONT OF THE INDUSTRIAL REVIVAL

### P.8 - 11

4 SECTORS OF EXCELLENCE OFFERING INDUSTRY-LEADING PERFORMANCE

### P.12

ECO-INDUSTRIES, A FLOURISHING SECTOR

### P.13

INVESTMENT IN INLAND WATERWAY LOGISTICS

### P.14 - 15

A TOP-QUALITY REAL ESTATE OFFER ON THE SEINE-PARIS-NORMANDY AXIS

## EDITORIAL

GPS&O is a dynamic, economically attractive region with over 50,000 companies for 130,000 jobs. 20% of these jobs are in industry, focused around major groups with a long-standing presence in the area such as ArianeGroup in Les Mureaux, Renault in Flins, Stellantis in Poissy or Safran in Le Mantois. We are also lucky enough to have companies which, although they may be smaller, are world-famous, such as Henri SELMER Paris and Buffet Crampon in Mantes-la-Ville, two of our very best instrument makers.

Awarded "Territoire d'Industrie"<sup>1</sup> status for the second time in 2023, winner of the "Rebond Industriel"<sup>2</sup> call for expressions of interest and fully committed to the France 2030 national programme, the Communauté Urbaine<sup>3</sup> is a catalyst for industrial renewal in the Seine valley, for decarbonisation and for revitalising the economic fabric. Supporting the reindustrialisation of our region is a priority, as moving production out of the country has demonstrated its limitations time and time again. The need to have production units in France is more than featuring prominently in current affairs. GPS&O needs to be at the forefront of this new industrial context, particularly by supporting local stakeholders participating in the national effort to guarantee sovereignty in space or those working to bring pharmaceutical production back into France.

Our economic development policy focuses on the region's companies and those who may move here. We aim to support them in setting up here, in their development, their attractiveness and their competitive challenges to help them remove any obstacles to their evolution. To contribute to their growth, we are also committed in three major areas: inland waterway logistics, preserving water resources and decarbonisation. Our region is organised around the Seine river, and we are convinced of its capacity to develop a reasoned logistics economy locally and to be a national and international link in inland waterway transport via port development. We have joined the Entente Axe Seine agreement alongside Le Havre, Rouen and Paris to back our local ambitions. The Seine has always been at the heart of the community project and must remain so - attractive in industrial, urban and recreational terms!

**Cécile Zammit-Popescu,**  
*President of Communauté urbaine  
Grand Paris Seine & Oise*

1. "Industry Region"  
2. "Industrial Recovery"  
3. similar to a metropolitan county in the UK

# AN ATTRACTIVE REGION AT THE GATES OF THE GREATER PARIS AREA



Grand Paris Seine & Oise enjoys a strategic geographical position, ideally situated 30 minutes from Paris on the Seine-Paris-Normandy axis.

With a diverse, dynamic economic fabric combined with excellent installation opportunities, GPS&O attracts remarkable high-tech companies, large internationally recognised groups and innovative small- and medium-sized businesses.

The Communauté Urbaine has emerged as the leading industrial employment pool in the Île-de-France region.

## KEY FIGURES

- 73 municipalities
- 424 510 inhabitants
- 500 km<sup>2</sup> surface area
- 90 km of Seine river banks
- 4 urban centres
- 2/3 natural spaces
- 28 000 companies
- 27,4% business creation rate as compared to 19.4% in Île-de-France
- 125 000 jobs, of which more than 22,000 are in industry
- 56 business parks



### AVAILABLE LAND AND CORPORATE REAL ESTATE

- 1 Mantes - Buchelay business park
- 2 Limay - Les Hauts-Reposoirs business park
- 7 urban centres
- Port land (65 hectares)

### TRANSPORT AND MOBILITY

- 26 STATIONS
- 2 MOTORWAYS from Paris: A13/A14
- 123 BUS LINES
- 2 PORTS HAROPA dedicated to inland waterway logistics
- ACCESS TO THE MAJOR AIRPORTS (50 min. Roissy CDG, Orly)

RER E station

A13/A14 motorways

PLANNED

- Extension of RER E as far as Mantes-la-Jolie
- Extension of Tram 13 as far as Achères via Poissy

# A REGION AT THE FOREFRONT OF THE INDUSTRIAL REVIVAL



GPS&O was awarded "Territoires d'industrie" status for the second time (period 2023/2027) for the Seine Aval area with the Saint Germain Boucles de Seine Communauté d'Agglomération<sup>4</sup> (CASGBS) and the Gally Mauldre and Les Portes de l'Île-de-France Communautés de Communes<sup>5</sup>.

## ACTING FOR INDUSTRIAL RECOVERY: 4 MILLION TO ACCELERATE PROJECTS LED BY THE INDUSTRIALISTS IN THE REGION

In 2023, Grand Paris Seine & Oise was one of the 19 winners of the "Rebond Industriel" call for expressions of interest launched as part of the France 2030 plan. At stake: 2 million euros of grants from the State. GPS&O consolidated this commitment in favour of industrial dynamism by the creation of a "Rebond Industriel" industrial recovery mission and an additional contribution of 2 million euros matching the state grant to support projects in the region.



4. metropolitan area  
5. joint local authorities

## A CROSS-SECTOR INDUSTRIAL CLUSTER

The Communauté Urbaine has created an industrial cluster. Its aim: foster collective actions and sharing between companies to increase their competitiveness in an approach combining the circular economy and decarbonisation.

It brings together around thirty of the largest companies in the region (Stellantis, Renault, ArianeGroup, Seqens, Safran, NextPharma, RHD, Linxens, Carta Rouxel, France Plastiques Recyclage, etc.).

ENCOURAGING COMPANIES TO REGAIN CONTROL OF INDUSTRIAL KNOW-HOW AND BRINGING PRODUCTION UNITS BACK INTO THE COUNTRY OPENS THE WAY TO A NEW INDUSTRIAL CONTEXT

Raphaël Cagnet,  
Vice-President responsible  
for economic development

**2019** 1st award of "Territoires d'Industrie" status  
Hosting of the 48th stage of the French Fab Tour

**2020** A total of €2.635m in regional grants awarded to ArianeGroup (€1.15m), Seqens (€0.485m) and Suez (€1m) to set up a joint photovoltaic panel installation programme

**2022** "Grand Lieu d'Innovation" status awarded to the Seqens'Lab by the Île-de-France region with a grant of €1.3m

**2023** Winner of the "Rebond Industriel" call for expressions of interest

Creation of a cross-sector industrial cluster

2nd award of "Territoires d'Industrie" status

**2024** Launch of the partnership between GPS&O and EDF on the decarbonisation of industry



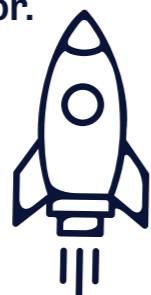
# 4 SECTORS OF EXCELLENCE OFFERING INDUSTRY-LEADING PERFORMANCE

As the leading Île-de-France region in the aerospace, automotive and instrument-making sectors, GPS&O also reports strong growth in the chemicals-pharmaceuticals sector.



## AEROSPACE:

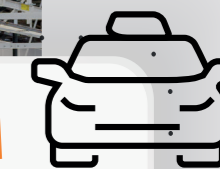
### GPS&O, BIRTHPLACE OF ARIANE 6



The region has 70 companies working in the sector, including major stakeholders: ArianeGroup, Safran Helicopter Engines, Safran Electronics & Defense and Daher Aerospace, to name a few. Many integrators and equipment manufacturers are based alongside them and participate in the value chain of this sector. (Pyroalliance, Carta Rouxel, etc.).



## AUTOMOTIVE:



→ An industry focusing on low-carbon mobilities. The only region in France to host the factories of two French manufacturers.

**16 000**



**JOBS**

ESTIMATED

**341** M€



**IN TURNOVER**

**90**



**COMPANIES**

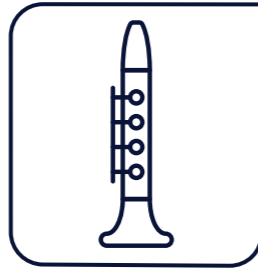
Alongside Stellantis and Renault, the main links in automotive subcontracting (equipment manufacturers, suppliers, design offices, etc.) also operate in the region.

→ **Renault Flins Refactory** : after 70 years and 17 million vehicles manufactured, Flins has become the leading European circular economy plant dedicated to the automotive sector with 2,000 employees (45,000 vehicles manufactured in 2023).

→ **Stellantis Group** : the Poissy site is home to the head office and the production plant (3,000 employees, 175,000 vehicles manufactured in 2022: Opel Mokka and DS3) and the Group's 1st "Green Campus" R&D centre in France.



**INSTRUMENT MAKING :  
A REMARKABLE INDUSTRIAL  
HERITAGE BASED ON  
UNIQUE KNOW-HOW**



Buffet Crampon and Henri SELMER Paris, world leaders in the manufacture of wind instruments have been based in the region, the cradle of instrument making, since the 19th century.

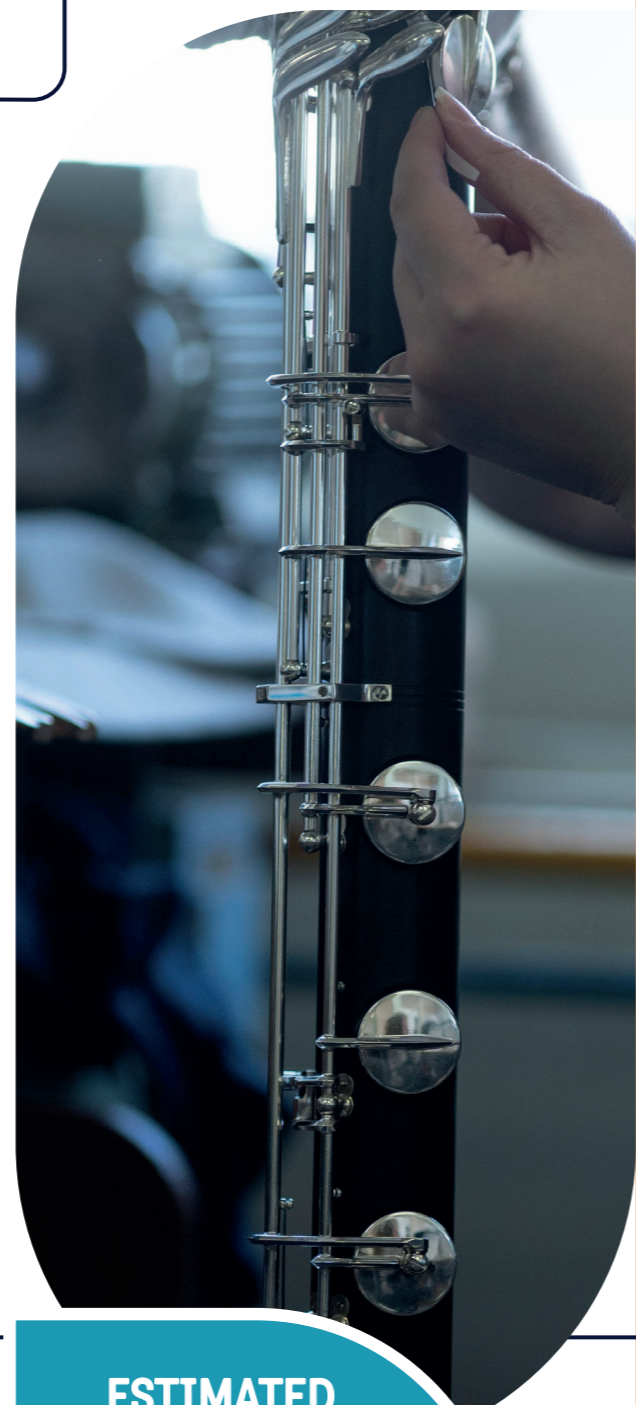
These companies make over half of the turnover of instrument makers in France and export almost all of their production (mainly to Asia, the United States and the rest of Europe).

Halfway between art and industry, this sector has established itself as an economic niche of excellence combining know-how and innovation.

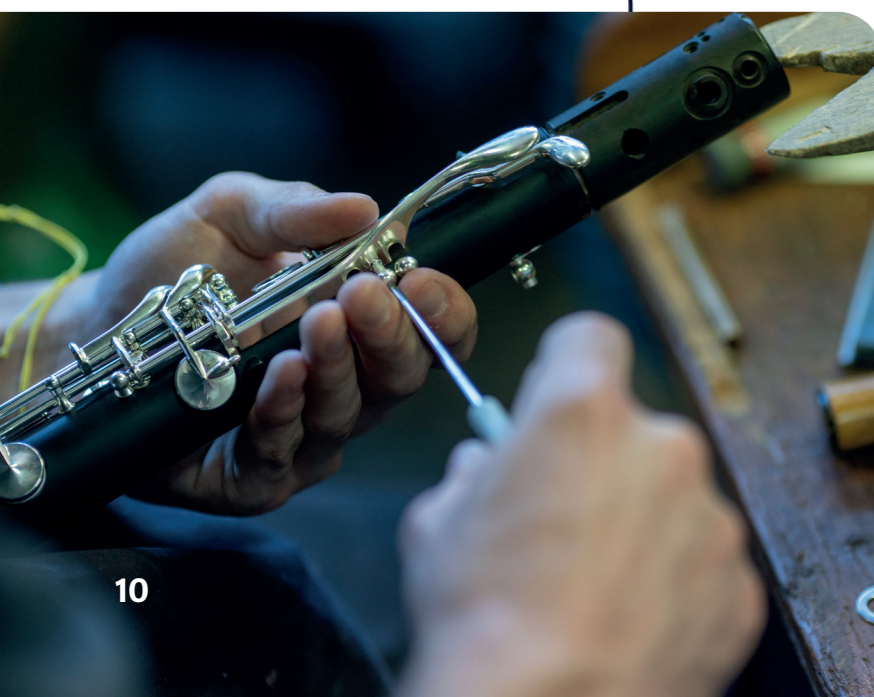
- **Buffet Crampon**, leading clarinet maker
- **Henri SELMER Paris**, leading saxophone maker
- **F. Lorée - de Gourdon**, awarded the Entreprise du Patrimoine Vivant<sup>6</sup> label, the world reference for oboes.

OVER **90%** OF PRODUCTION EXPORTED | **750** JOBS

6. Living Heritage Company



**ESTIMATED  
95 M€  
IN TURNOVER**  
ALMOST 50% OF THE  
TURNOVER FOR THE SECTOR  
IN FRANCE



**CHEMICALS-PHARMACEUTICALS :  
A BOOMING SECTOR**



Seqens, the leading operator in France, 2nd largest in Europe and 6th worldwide in pharmaceutical and chemical synthesis, has been present in the region since 2017. Other top companies are also present, thus strengthening the dynamism of an industrial hub dedicated to health: NextPharma, Linde, Fareva, Cromaoak, etc.

→ **Seqens** : its Seqens'Lab R&D centre, granted "Grand Lieu d'Innovation" status by the Île-de-France region in 2022, is home to "HitCat", a research laboratory in partnership with CNRS, the French National Centre for Scientific Research.

→ **NextPharma** : this European group is the world leader in the field of pharmaceutical, biotechnology and veterinary subcontracting.

In 2024, Seqens and NextPharma will be contributing to France's medical sovereignty, with the manufacture of five molecules of national interest being brought back into France post-COVID. GPS&O alone will provide 10% of the national effort.



**15** COMPANIES

**1000** JOBS

# THE ECO-INDUSTRIES A LONG-STANDING SECTOR



## GPS&O, A FLAGSHIP REGION IN TERMS OF ECO-INDUSTRY

Technology and environmental service industries are particularly numerous in the region: water treatment, renewable energy, the fight against air pollution, soil depollution, waste processing, etc. Among the companies present are the major groups in the sector, Suez and Veolia, as well as numerous small- and medium-sized companies, some of which are internationally recognised (Envea, SEPUR, France Plastiques Recyclage, Tryon environnement, INOE, GDE, EAV - a subsidiary of Veolia, etc.).

The region is also home to emblematic facilities such as the Sarp Industries hazardous waste treatment centre or the SIAAP.



## GPS&O, A REGION COMMITTED TO THE CIRCULAR ECONOMY

Building on a favourable industrial eco-system with almost one in five jobs in this sector, GPS&O is aiming to become a region at the cutting edge of the circular economy. The Communauté Urbaine is engaged in a regional industrial ecology approach with the companies in the cluster, focusing in particular on the development of inland waterway transport.

The region also has:

- Exemplary project sponsors, such as Renault Refractory or the Stellantis Green Campus;
- Leading operators in reuse and recycling (Aptima, La Gerbe, EBS le Relais Val de Seine, Recyc Matelas).



**1**  
HUB DEDICATED  
TO ECO-CONSTRUCTION,  
ECO-MATERIALS AND THE  
ENERGY TRANSITION

# INVESTMENT IN INLAND WATERWAY LOGISTICS



**HAROPA PORT** PORT OF LIMAY-PORCHEVILLE

LEADING RIVER-SEA PORT OF ILE-DE-FRANCE

SURFACE AREA OF

**125**<sup>HA</sup>

RIVER TRAFFIC  
OF OVER **1**<sup>MT</sup>  
(2017)

**4<sup>e</sup>** LARGEST INLAND  
WATERWAY CONTAINER  
TERMINAL  
ON THE SEINE

## EXTENSION PROJECT

- + 32 ha
- + 300 jobs created
- 20 million euros of investment



**HAROPA PORT** PORT SEINE MÉTROPOLE OUEST

ACHÈRES, CONFLANS-SAINTE-HONORINE, ANDRÉSY

## CREATION PROJECT

- + 100 ha
- 52 ha dedicated to economic activities - construction and public works
- 19 ha of landscaped areas (19% of the project planted)
- + 750 jobs created
- 122 million euros of investment

## GREEN DELIRIVER A PROJECT FOR LOW-CARBON WATERWAY LOGISTICS

SEGULA Technologies, in partnership with GPS&O and GRDF, is developing a goods transport project using a vessel with a hybrid electric/CNG biogas engine.



# A TOP-QUALITY REAL ESTATE OFFER ON THE SEINE-PARIS-NORMANDY AXIS

**GPS&O, PARTNER FOR YOUR INSTALLATION PROJECT, OFFERS PERSONALISED ASSISTANCE TO MEET YOUR NEEDS**

- Assistance for installation in our business parks: identification of business real estate, development of roads and utilities, etc.
- Support for your residential journey within our corporate real estate network (incubators, business centres, industrial and rented buildings).

- + 1 500 ha dedicated to economic activity
- 7 major business hubs
- 12 corporate real estate sites
- + 16 000 m<sup>2</sup> of rental space
- 56 business parks

## ACCESSIBILITY OF BUSINESS PARKS :

### LES HAUTS-REPOSOIRS - LIMAY & MANTES - BUCHELAY



Connected to Beauvais, Orly and Roissy Charles de Gaulle airports



7 bus lines



Close to two major motorway links (A13, A14)



10 to 20 minutes from the stations at Mantes and Limay



30 minutes from La Défense, lines J and N, Paris Normandie, RER E in 2026  
Le Havre-Lyon-Marseille TGV high-speed train



Less than 10 km from the port of Limay and its logistics platform



### LES HAUTS-REPOSOIRS – LIMAY BUSINESS PARK

- The hub brings together several remarkable industrial sectors identified at regional level in particular, construction (KP1, ALPA steelworks), pharmaceuticals (Seqens, NextPharma) and eco-industry (Suez environnement, GDE).

**45<sup>HA</sup>**  
SURFACE AREA

**56** **COMPANIES**

**THE HAUTS-REPOSOIRS BUSINESS PARK, A CANDIDATE FOR THE « SITES CLÉS EN MAIN »<sup>7</sup> LABEL TO:**

- Have this park listed as a site of high industrial potential;
- Obtain recognition of the quality of the surroundings, the real estate mutability, compactness, attractiveness, accessibility, diverse mix, etc.

7. « turnkey sites »

**765**  
EMPLOYEES

ADDITIONAL  
**15<sup>HA</sup>** **OF REAL ESTATE AVAILABLE**



### MANTES – BUCHELAY BUSINESS PARK

- The Mantes - Buchelay business park is one of the major mixed hubs in the region. Ideally positioned, it attracts varied and complementary activities ranging from services and retail to industry, crafts and logistics, etc.

They chose the Mantes - Buchelay business park: Leroy Merlin, Safran Helicopter Engines, Linxens, France Boissons among others.

**270** **COMPANIES**

**107<sup>HA</sup>** SURFACE AREA

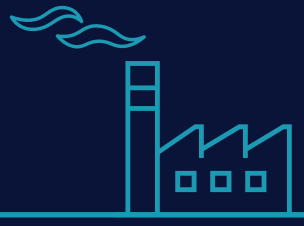
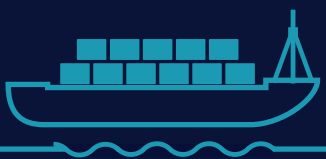
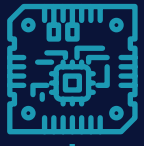
**3150** **EMPLOYEES**

AN ADDITIONAL  
**3<sup>HA</sup>** OF REAL ESTATE AVAILABLE  
(1 HA FOR A LEISURE HUB AND 2 HA FOR ECONOMIC ACTIVITIES)





© Conception : GFS&O 2024 - N.LACROIX & C.HUCHER - SIRET : 200 059 889 00010 - Imprimea  
© crédits photo : ArianeGroup/PEPERBOX/Julien Hazemann - Renault Group - HenriSÉLME/Rparis-L.Bigo - Segens - Antoine Meyssonmier - Ludovic DELAGE - Objectif Aéro



   [gpseo.fr](https://gpseo.fr) ▼

Contact: [deveco@gpseo.fr](mailto:deveco@gpseo.fr)



Immeuble Autoneum  
Rue des Chevries - 78410 AUBERGENVILLE

